

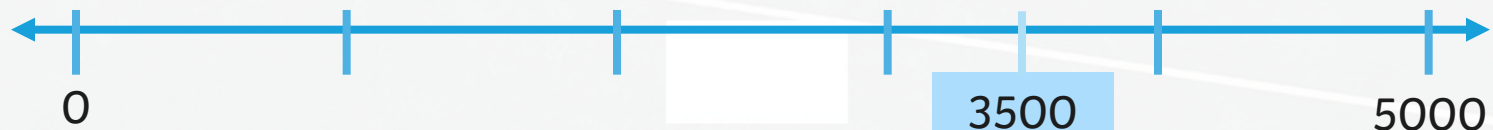
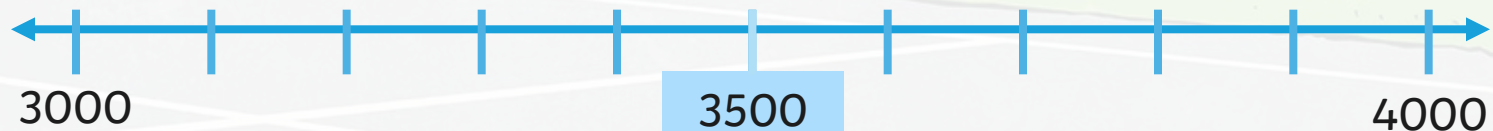
Identify, Represent and Estimate



Number Lines

Laura draws 4 number lines and marks a number at either end. She asks Alfie to mark the number 3500 on each number line.

Where will Alfie mark 3500?



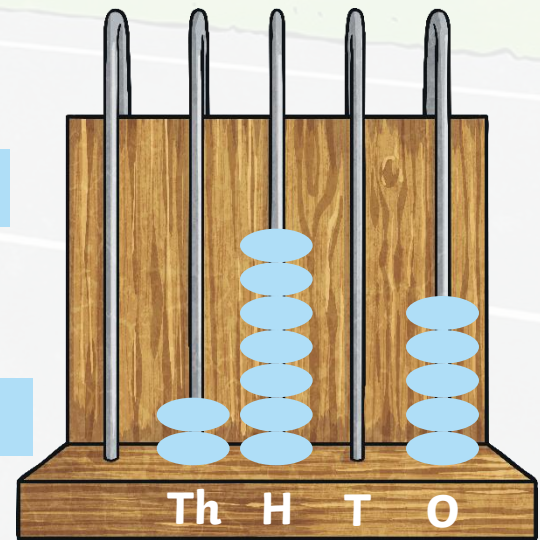
Draw some number lines for a partner to mark a number you give them.



Abacus

Fatima has an abacus to represent four-digit numbers. The following beads are already on the abacus. She has one more bead. Where can she place the bead to make the following:

1. An even number. **Ones column**
2. A multiple of 5. **Thousands or hundreds or tens**
3. A multiple of 3. **Any column**
4. The largest number possible. **Thousands column**
5. The smallest number possible. **Ones column**
6. A number with all digits odd. **Impossible**

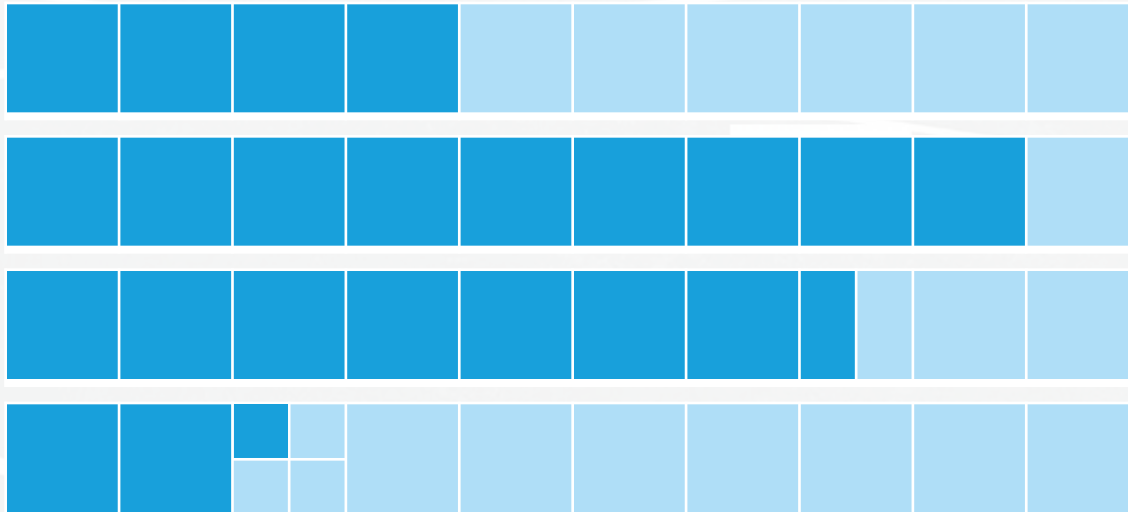


Share your answers with a partner to check.



Place Value Grids

Alfie draws some place value grids, where each square in the grid has a value of 1000. He then writes the value of each number next to the grid. Check his answers with a partner.



4000

9000

7000

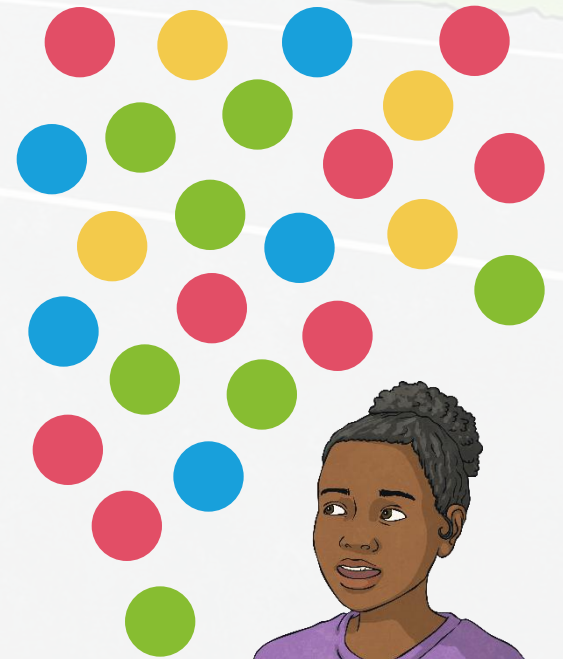
2250

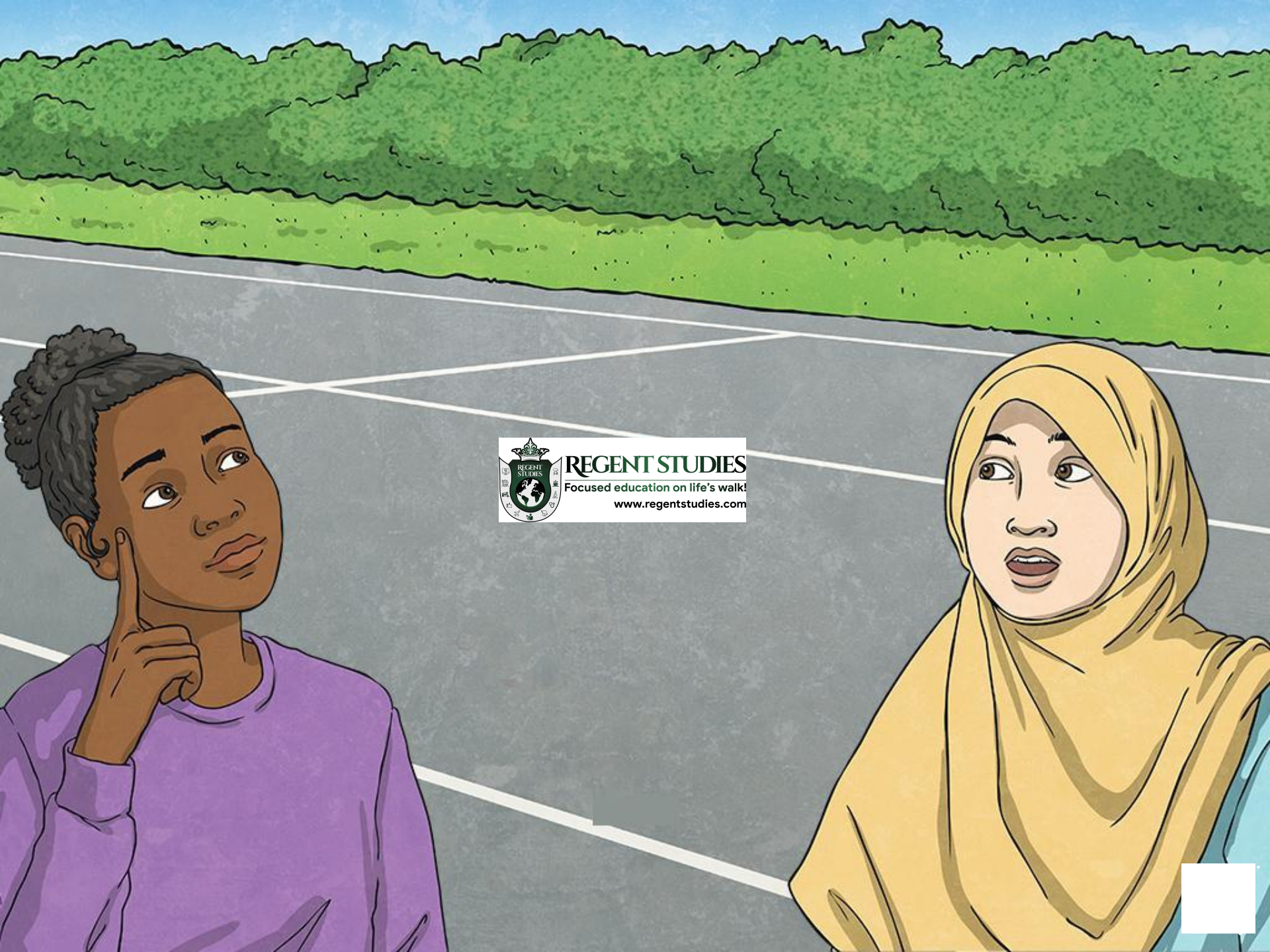


Place Value Discs

Laura and Alfie have some place value discs. Each different colour disc represents either thousands, hundreds, tens and ones. They use the discs to represent the number 5847. The discs are mixed up. Can you see which discs represent which place value?

Thousands Th	Hundreds H	Tens T	Ones O





REGENT STUDIES

Focused education on life's walk!

www.regentstudies.com

